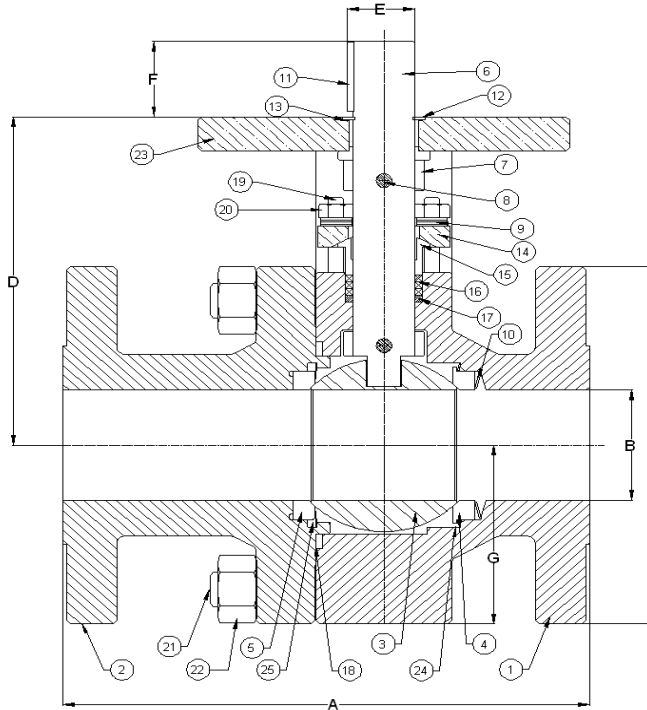


REMINGTON VALVE, LLC.

ENGINEERING DIMENSIONS .5 THRU 2.5 RFFE

PARTS LIST

Item	Description
1	Body
2	End Connection
3	Ball
4	Seat /Push Ring
5	Seat - Downstream
6	Stem
7	Collar
8	Pin
9	Belleville Spring
10	Load Spring
11	Stem Key
12	Retainer Ring
13	Washer
14	Gland Flange
15	Packing Follower
16	Packing
17	Anti Extrusion Ring
18	Gasket
19	Stud
20	Nut
21	Stud
22	Nut
23	Mounting Bracket
24	Solids Excluder
25	Locking Ring



ANSI 150

NOMINAL SIZE	A	B	C	D	E	F	G	CV
1/2	4.25	0.50	3.50	4.17	0.56	1	1.88	24
3/4	4.62	0.75	3.88	4.87	0.56	1	2.09	52
1	5.00	1.12	4.25	5.13	0.75	1.3	2.44	143
1 1/2	6.50	1.50	5.00	5.64	0.87	1.6	2.75	265
2	7.00	2.00	6.00	5.87	0.75	1.3	3	545
2 1/2	7.50	2.50	7.00	6.12	1.19	1.7	3.5	945

ANSI 600

NOMINAL SIZE	A	B	C	D	E	F	G	CV
1/2	6.50	0.50	3.75	4.36	0.56	1	1.88	20
3/4	7.50	0.75	4.63	4.87	0.56	1	2.09	42
1	8.50	1.12	4.88	5.13	0.75	1.3	2.44	109
1 1/2	9.50	1.50	6.12	5.98	0.87	1.6	2.75	222
2	11.50	2.00	6.50	5.98	1.06	1.7	3.25	425
2 1/2	13.00	2.50	7.50	6.2	1.06	1.9	3.75	715

ANSI 300

NOMINAL SIZE	A	B	C	D	E	F	G	CV
1/2	5.50	0.50	3.75	4.36	0.56	1	1.88	22
3/4	6.00	0.75	4.63	4.87	0.56	1	2.09	48
1	6.50	1.12	4.88	5.13	0.75	1.3	2.44	125
1 1/2	7.50	1.50	6.12	5.98	0.87	1.6	2.75	250
2	8.50	2.00	6.50	5.98	1.06	1.7	3.25	490
2 1/2	9.50	2.50	7.50	6.12	1.19	1.7	3.5	841

ANSI 900/1500

NOMINAL SIZE	A	B	C	D	E	F	G	CV
1/2	8.50	0.50	4.75	4.8	0.56	1	2.25	18
3/4	9.00	0.75	5.12	4.9	0.56	1	2.25	35
1	10.00	1.12	5.88	5.6	0.75	1.3	2.94	100
1 1/2	12.00	1.50	7.00	7.2	1.06	1.6	3.5	195
2	14.50	2.00	8.50	6.8	1.19	1.7	3.5	278
2 1/2	16.50	2.13	9.63	6.5	1.5	1.9	3.75	419

ANSI 2500

NOMINAL SIZE	A	B	C	D	E	F	G	CV
1/2	10.38	0.50	5.25	5.25	0.56	1	2.5	20
3/4	10.75	0.75	5.50	6.1	0.69	1.3	2.75	44
1	12.12	1.12	6.25	6.7	0.87	1.6	3	105
1 1/2	15.12	1.40	8.00	6.7	0.87	1.6	3	220
2	17.75	1.50	9.25	6.5	1.19	1.7	3.5	429
2 1/2	20.00	2.00	10.50	9.2	1.6	2.8	4.25	718

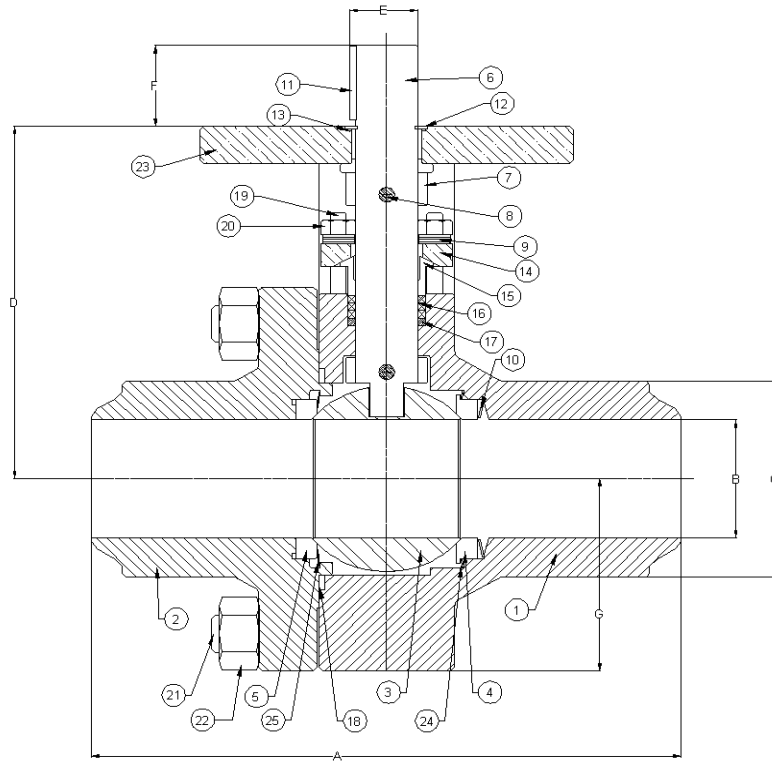
Products are designed in accordance with ASME, ANSI and API standards. All dimensions in inches.

REMINGTON VALVE, LLC.

ENGINEERING DIMENSIONS .5 THRU 2.5 BW

PARTS LIST

- | | |
|------|---------------------|
| Item | Description |
| 1 | Body |
| 2 | End Connection |
| 3 | Ball |
| 4 | Seat /Push Ring |
| 5 | Seat - Downstream |
| 6 | Stem |
| 7 | Collar |
| 8 | Pin |
| 9 | Belleville Spring |
| 10 | Load Spring |
| 11 | Stem Key |
| 12 | Retainer Ring |
| 13 | Washer |
| 14 | Gland Flange |
| 15 | Packing Follower |
| 16 | Packing |
| 17 | Anti Extrusion Ring |
| 18 | Gasket |
| 19 | Stud |
| 20 | Nut |
| 21 | Stud |
| 22 | Nut |
| 23 | Mounting Bracket |
| 24 | Solids Excluder |
| 25 | Locking Ring |



ANSI 150

NOMINAL SIZE	A	B	C	D	E	F	G	CV
1/2	4.25	0.50	0.90	4.17	0.56	1	1.88	24
3/4	4.62	0.75	1.18	4.87	0.56	1	2.09	55
1	5.00	1.12	1.50	5.13	0.75	1.3	2.44	143
1 1/2	6.50	1.50	2.09	5.64	0.87	1.6	2.75	271
2	7.00	2.00	2.57	5.87	0.75	1.3	3	550
2 1/2	7.50	2.50	3.00	6.12	1.19	1.7	3.5	950

ANSI 600

NOMINAL SIZE	A	B	C	D	E	F	G	CV
1/2	6.50	0.50	0.94	4.36	0.56	1	1.88	20
3/4	7.50	0.75	1.18	4.87	0.56	1	2.09	44
1	8.50	1.12	1.56	5.13	0.75	1.3	2.44	105
1 1/2	9.50	1.50	2.00	5.98	0.87	1.6	2.75	220
2	11.50	2.00	2.56	5.98	1.06	1.7	3.25	427
2 1/2	13.00	2.50	3.12	6.2	1.5	1.9	3.75	715

ANSI 300

NOMINAL SIZE	A	B	C	D	E	F	G	CV
1/2	5.50	0.50	0.94	4.36	0.56	1	1.88	25
3/4	6.00	0.75	1.22	4.87	0.56	1	2.09	49
1	6.50	1.12	1.56	5.13	0.75	1.3	2.44	120
1 1/2	7.50	1.50	1.94	5.98	0.87	1.6	2.75	250
2	8.50	2.00	2.63	5.98	1.06	1.7	3.25	495
2 1/2	9.50	2.50	3.06	6.12	1.19	1.7	3.5	846

ANSI 900/1500

NOMINAL SIZE	A	B	C	D	E	F	G	CV
1/2	8.50	0.50	1.02	4.8	0.56	1	2.25	18
3/4	9.00	0.75	1.34	4.9	0.56	1	2.25	38
1	10.00	1.12	1.80	5.6	0.75	1.3	2.94	102
1 1/2	12.00	1.50	2.34	7.2	1.06	1.6	3.5	199
2	14.50	2.00	3.00	6.8	1.19	1.7	3.5	380
2 1/2	16.50	2.13	3.31	6.5	1.5	1.9	3.75	427

ANSI 2500

NOMINAL SIZE	A	B	C	D	E	F	G	CV
1/2	10.38	0.50	1.20	5.25	0.56	1	2.5	17
3/4	10.75	0.75	1.60	6.1	0.69	1.3	2.75	35
1	12.12	1.12	2.18	6.7	0.87	1.6	3	91
1 1/2	15.12	1.40	2.80	6.7	1.19	1.7	3	85
2	17.75	1.50	3.64	6.5	1.7	2.6	3.5	160
2 1/2	20.00	2.00	3.33	9.2	1.6	2.8	4.25	235

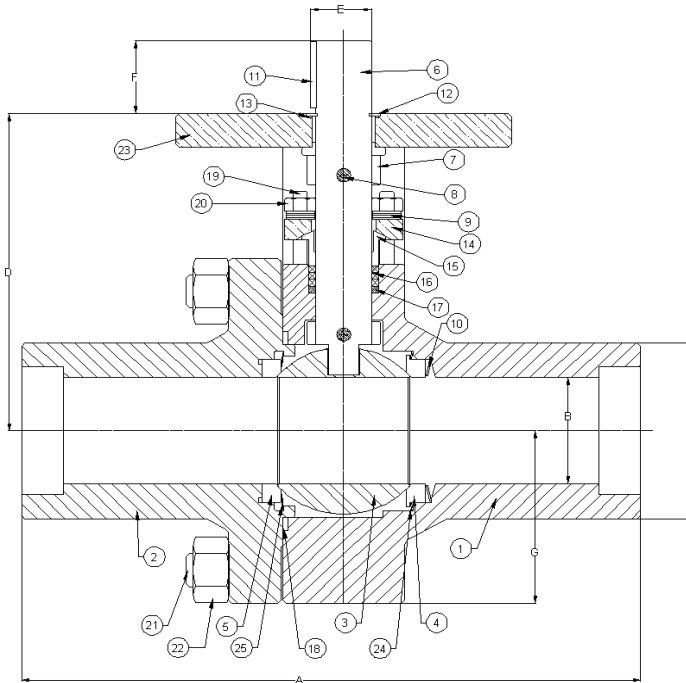
Products are designed in accordance with ASME, ANSI and API standards. All dimensions in inches.

REMINGTON VALVE, LLC.

ENGINEERING DIMENSIONS .5 THRU 2.5 SW

PARTS LIST

Item	Description
1	Body
2	End Connection
3	Ball
4	Seat /Push Ring
5	Seat - Downstream
6	Stem
7	Collar
8	Pin
9	Belleville Spring
10	Load Spring
11	Stem Key
12	Retainer Ring
13	Washer
14	Gland Flange
15	Packing Follower
16	Packing
17	Anti Extrusion Ring
18	Gasket
19	Stud
20	Nut
21	Stud
22	Nut
23	Mounting Bracket
24	Solids Excluder
25	Locking Ring



ANSI 150

NOMINAL SIZE	A	B	C	D	E	F	G	CV
1/2	4.25	0.50	1.20	4.17	0.56	1	1.88	30
3/4	4.62	0.75	1.43	4.87	0.56	1	2.09	64
1	5.00	1.12	1.71	5.13	0.75	1.3	2.44	162
1 1/2	6.50	1.50	2.32	5.64	0.87	1.6	2.75	292
2	7.00	2.00	2.85	5.87	0.75	1.3	3	592
2 1/2	7.50	2.50	3.43	6.12	1.19	1.7	3.5	1010

ANSI 600

NOMINAL SIZE	A	B	C	D	E	F	G	CV
1/2	6.00	0.50	1.25	4.36	0.56	1	1.88	24
3/4	6.25	0.75	1.49	4.87	0.56	1	2.09	51
1	6.50	1.12	1.80	5.13	0.75	1.3	2.44	135
1 1/2	7.50	1.50	2.44	5.98	0.87	1.6	2.75	280
2	8.50	2.00	2.97	5.98	1.06	1.7	3.25	545
2 1/2	9.50	2.50	3.58	6.2	1.5	1.9	3.75	915

ANSI 300

NOMINAL SIZE	A	B	C	D	E	F	G	CV
1/2	5.50	0.50	1.20	4.36	0.56	1	1.88	26
3/4	6.00	0.75	1.43	4.87	0.56	1	2.09	51
1	6.50	1.12	1.71	5.13	0.75	1.3	2.44	135
1 1/2	7.50	1.50	2.32	5.98	0.87	1.6	2.75	280
2	8.50	2.00	2.85	5.98	1.06	1.7	3.25	545
2 1/2	9.50	2.50	3.43	6.12	1.19	1.7	3.5	910

ANSI 900/1500

NOMINAL SIZE	A	B	C	D	E	F	G	CV
1/2	6.50	0.50	1.35	4.8	0.56	1	2.25	31
3/4	6.50	0.75	1.63	4.9	0.56	1	2.25	50
1	7.50	1.12	1.95	5.6	0.75	1.3	2.94	130
1 1/2	9.00	1.50	2.70	7.2	1.06	1.6	3.5	249
2	11.00	2.00	3.33	6.8	1.19	1.7	3.5	469
2 1/2	12.75	2.13	3.92	6.5	1.5	1.9	3.75	505

ANSI 2500

NOMINAL SIZE	A	B	C	D	E	F	G	CV
1/2	8.00	0.50	1.58	5.25	0.56	1	2.5	20
3/4	9.00	0.75	1.82	6.1	0.69	1.3	2.75	40
1	10.00	1.12	2.19	6.7	0.87	1.6	3	105
1 1/2	11.00	1.40	3.01	6.7	1.19	1.7	3	103
2	12.00	1.50	3.73	6.5	1.7	2.6	3.5	210
2 1/2	14.00	2.00	4.45	9.2	1.6	2.8	4.25	297

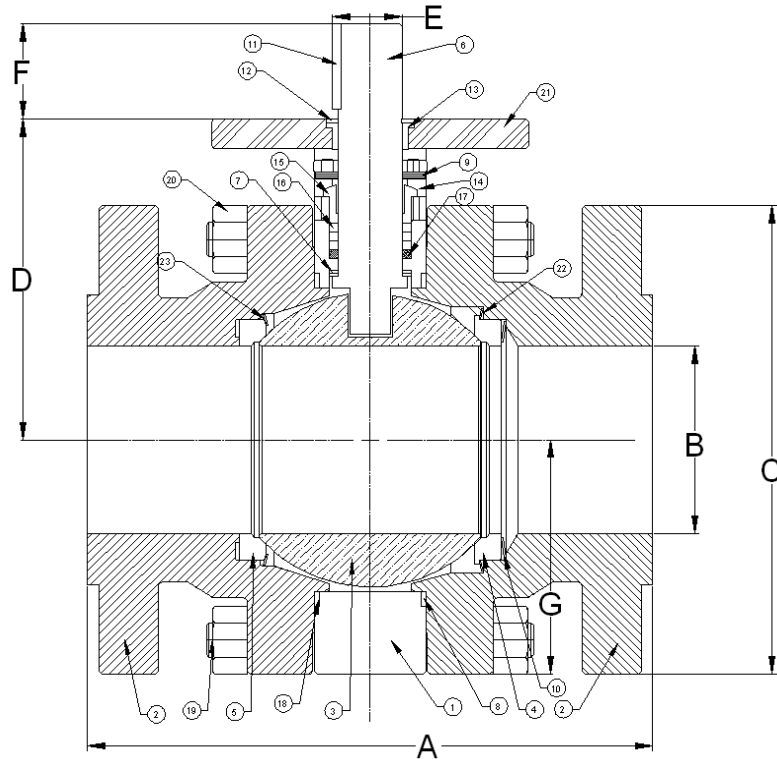
Products are designed in accordance with ASME, ANSI and API standards. All dimensions in inches.

REMINGTON VALVE, LLC.

ENGINEERING DIMENSIONS 3 THRU 12 RFFE

PARTS LIST

Item	Description
1	Body
2	End Connection
3	Ball
4	Seat /Push Ring
5	Seat - Downstream
6	Stem
7	Stem Bushing
8	Gasket
9	Belleville Spring
10	Load Spring
11	Stem Key
12	Retainer Ring
13	Bushing
14	Gland Flange
15	Packing Follower
16	Packing
17	Anti Extrusion Ring
18	Gasket
19	Stud
20	Nut
21	Mounting Bracket
22	Solids Excluder
23	Locking Ring



ANSI 150

NOMINAL SIZE	A	B	C	D	E	F	G
3	8.00	3.00	7.50	5.5	0.8	1.1	3.75
4	9.00	4.00	9.00	6.8	1.3	2	5
6	15.50	6.00	11.00	9.9	2.3	2.6	7
8	18.00	8.00	13.50	11.5	2.5	2	8.1
10	21.00	10.00	16.00	13.9	2.8	2.7	10.5
12	24.00	12.00	19.00	15.6	3	2.5	12

ANSI 900

NOMINAL SIZE	A	B	C	D	E	F	G
3	15.00	3.00	9.50	8.3	1.5	2.5	4.3
4	18.00	3.62	11.50	10.4	2.1	3	5.8
6	24.00	5.50	15.00	11.1	3	2.2	7.5
8	29.00	7.19	18.50	12.9	3.6	2.9	9.3
10	33.00	9.06	21.50	15.5	4.5	4.5	10.7
12	38.00	10.75	24.00	16.4	5.5	4.5	12

ANSI 300

NOMINAL SIZE	A	B	C	D	E	F	G
3	11.12	3.00	8.25	7.3	1.3	1.3	4.1
4	12.00	4.00	10.00	7.1	1.5	1.7	5
6	15.88	6.00	12.50	9.9	2.2	2.6	7
8	19.75	8.00	15.00	16.7	2.8	3.2	9
10	22.38	10.00	17.50	15.5	3.5	3.1	11
12	25.50	12.00	20.50	15.7	4	3	12

ANSI 1500

NOMINAL SIZE	A	B	C	D	E	F	G
3	18.50	2.62	10.50	9.3	1.7	2.5	4.5
4	21.50	3.44	12.25	9.1	2.5	2.8	6.1
6	27.75	5.19	15.50	13	3.3	3	7.8
8	32.75	6.81	19.00	16.5	4	5	9.5
10	39.00	8.50	23.00	17.4	5.5	4.5	11.5
12	44.50	10.13	26.50	18.3	6.7	4.5	13.3

ANSI 600

NOMINAL SIZE	A	B	C	D	E	F	G
3	14.00	3.00	8.25	7.3	1.3	1.3	4.1
4	17.00	4.00	10.75	9.9	2.1	3	5.7
6	22.00	6.00	14.00	10.6	2.5	2.4	7.3
8	26.00	7.87	16.50	13.9	3.3	2.7	8.4
10	31.00	9.75	20.00	17.3	4	4.5	11.6
12	33.00	11.75	22.00	18.1	5	4	12.7

ANSI 2500

NOMINAL SIZE	A	B	C	D	E	F	G
3	22.75	2.30	12.00	8.9	1.8	1.8	4.5
4	26.50	3.15	14.00	11.4	2.5	2.8	6.5
6	35.00	4.90	19.00	13.2	3.3	6.8	8.5
8	40.25	6.81	21.75	16.8	5.2	5	9.8
10	50.00	8.50	26.50	17.7	7.5	6.5	11.8
12	56.00	10.13	30.00	18.9	8	6.5	13.5

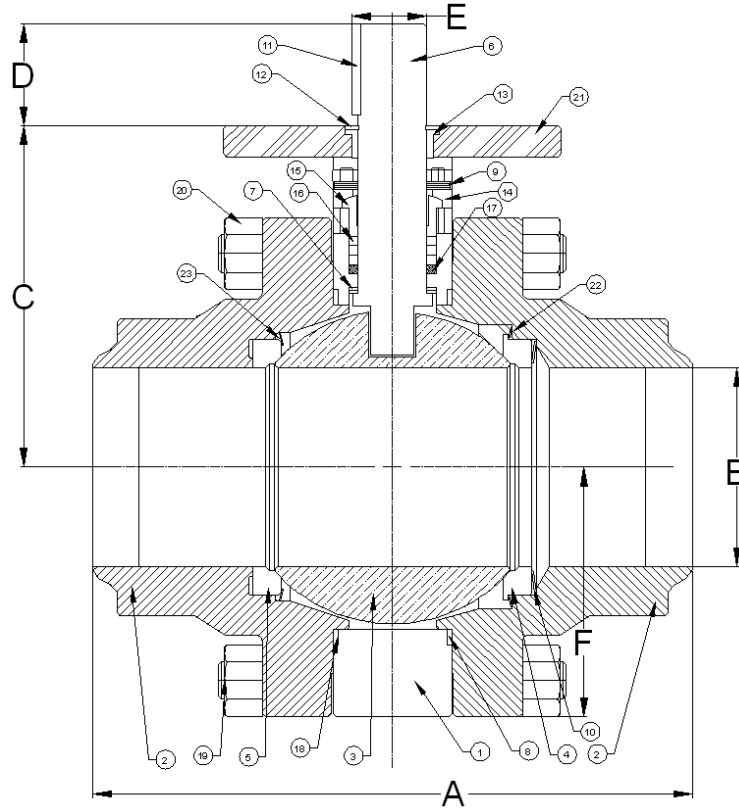
Products are designed in accordance with ASME, ANSI and API standards. All dimensions in inches.

REMINGTON VALVE, LLC.

ENGINEERING DIMENSIONS 3 THRU 12 BW

PARTS LIST

Item	Description
1	Body
2	End Connection
3	Ball
4	Seat /Push Ring
5	Seat - Downstream
6	Stem
7	Stem Bushing
8	Gasket
9	Belleville Spring
10	Load Spring
11	Stem Key
12	Retainer Ring
13	Bushing
14	Gland Flange
15	Packing Follower
16	Packing
17	Anti Extrusion Ring
18	Gasket
19	Stud
20	Nut
21	Mounting Bracket
22	Solids Excluder
23	Locking Ring



ANSI 150

NOMINAL SIZE	A	B	C	D	E	F	G
3	8.00	3.00	7.50	5.5	0.8	1.1	3.75
4	9.00	4.00	9.00	6.8	1.3	2	5
6	15.50	6.00	11.00	9.9	2.3	2.6	7
8	18.00	8.00	13.50	11.5	2.5	2	8.1
10	21.00	10.00	16.00	13.9	2.8	2.7	10.5
12	24.00	12.00	19.00	15.6	3	2.5	12

ANSI 900

NOMINAL SIZE	A	B	C	D	E	F	G
3	15.00	3.00	9.50	8.3	1.5	2.5	4.3
4	18.00	3.62	11.50	10.4	2.1	3	5.8
6	24.00	5.50	15.00	11.1	3	2.2	7.5
8	29.00	7.19	18.50	12.9	3.6	2.9	9.3
10	33.00	9.06	21.50	15.5	4.5	4.5	10.7
12	38.00	10.75	24.00	16.4	5.5	4.5	12

ANSI 300

NOMINAL SIZE	A	B	C	D	E	F	G
3	11.12	3.00	8.25	7.3	1.3	1.3	4.1
4	12.00	4.00	10.00	7.1	1.5	1.7	5
6	15.88	6.00	12.50	9.9	2.2	2.6	7
8	19.75	8.00	15.00	16.7	2.8	3.2	9
10	22.38	10.00	17.50	15.5	3.5	3.1	11
12	25.50	12.00	20.50	15.7	4	3	12

ANSI 1500

NOMINAL SIZE	A	B	C	D	E	F	G
3	18.50	2.62	10.50	9.3	1.7	2.5	4.5
4	21.50	3.44	12.25	9.1	2.5	2.8	6.1
6	27.75	5.19	15.50	13	3.3	3	7.8
8	32.75	6.81	19.00	16.5	4	5	9.5
10	39.00	8.50	23.00	17.4	5.5	4.5	11.5
12	44.50	10.13	26.50	18.3	6.7	4.5	13.3

ANSI 600

NOMINAL SIZE	A	B	C	D	E	F	G
3	14.00	3.00	8.25	7.3	1.3	1.3	4.1
4	17.00	4.00	10.75	9.9	2.1	3	5.7
6	22.00	6.00	14.00	10.6	2.5	2.4	7.3
8	26.00	7.87	16.50	13.9	3.3	2.7	8.4
10	31.00	9.75	20.00	17.3	4	4.5	11.6
12	33.00	11.75	22.00	18.1	5	4	12.7

ANSI 2500

NOMINAL SIZE	A	B	C	D	E	F	G
3	22.75	2.30	12.00	8.9	1.8	1.8	4.5
4	26.50	3.15	14.00	11.4	2.5	2.8	6.5
6	35.00	4.90	19.00	13.2	3.3	6.8	8.5
8	40.25	6.81	21.75	16.8	5.2	5	9.8
10	50.00	8.50	26.50	17.7	7.5	6.5	11.8
12	56.00	10.13	30.00	18.9	8	6.5	13.5

Products are designed in accordance with ASME, ANSI and API standards. All dimensions in inches.